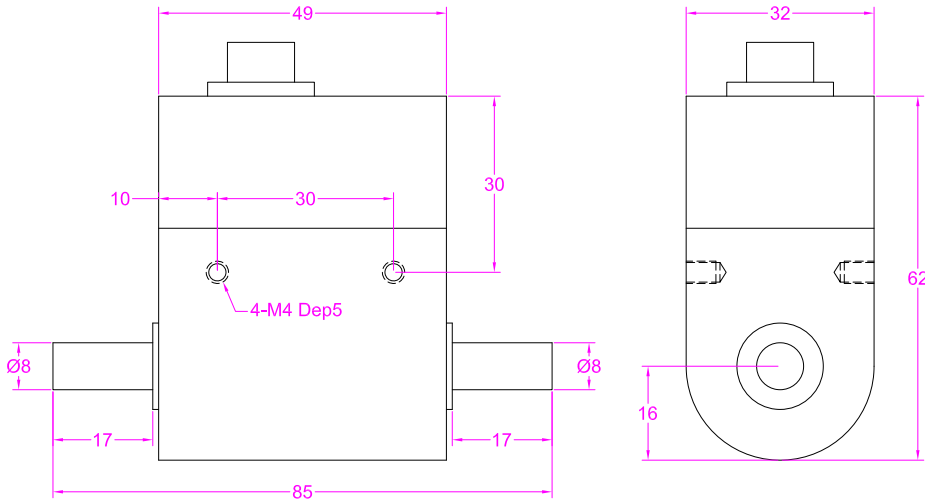


Dimensions in "mm"

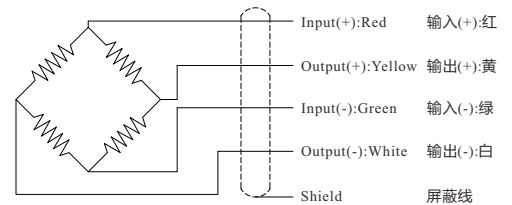


- Rotating speed should be lower than 4000 r/m
- 转速应低于4000转/分

**Ordering code**

**FYF-5NM**  
 Model Capacity

Wiring Diagram/接线图



--- Specifications / 规格参数 ---

| Capacity/量程                                | 0.1/0.2/0.5/1/2/3/5NM  |                               |                        |
|--|--|-------------------------------|------------------------|
| Rated Output<br>额定输出                       | 1.0 mV/V   | Compensated Temp.<br>温度补偿范围   | -10...+40°C            |
| Excitation<br>激励电压                         | 3~15V  | Operating Temp.<br>工作温度范围     | -20...+60°C            |
| Zero Balance<br>零点输出                       | ±2% of R.O.  | Temp. Shift Zero<br>零点温度漂移    | ±0.01% of R.O./°C      |
| Nonlinearity<br>非线性                        | ±0.2% of R.O.  | Temp. Shift Span<br>灵敏度温度漂移   | ±0.01% of R.O./°C      |
| Hysteresis<br>滞后                           | ±0.2% of R.O.  | Input Resistance<br>输入阻抗      | 350±30Ω                |
| Nonrepeatability<br>非重复性                   | ±0.05% of R.O.   | Output Resistance<br>输出阻抗     | 350±5Ω                 |
| Creep(30min)<br>蠕变                         | ±0.1% of R.O.  | Insulation Resistance<br>绝缘阻抗 | >5000MΩ(50V)           |
| Safe Overload<br>安全过载                      | 120% of F.S.   | Ingress Protection<br>防护等级    | IP62                   |
| Ultimate Overload<br>极限过载                  | 200% of F.S.   | Material of Element<br>弹性体材料  | Stainless steel<br>不锈钢 |
| Cable<br>导线                                | Ø5.5*3000mm 4-core shielded cable with mating connector<br>Ø5.5*3000mm 4芯屏蔽线 |                               |                        |
| R.O.=Rated Output/额定输出 F.S.=Full Scale/满量程 |  |                               |                        |

• Subject to change without notice / 如有更改,不另行通知