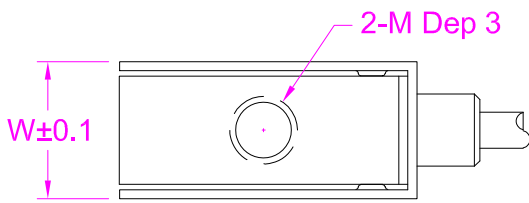
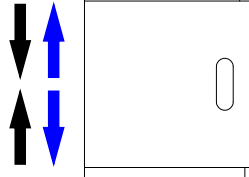
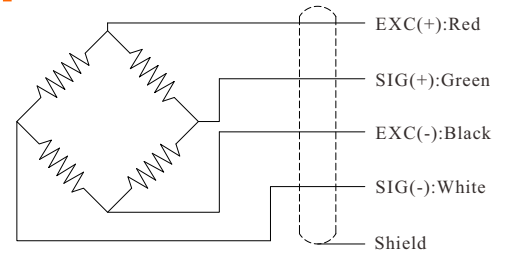


Load direction
受力方向



Ordering code
FSSP - 5kg
Model Capacity

Wiring Diagram



| Capacity(kg) | W | M |
|-----------------|-----|----|
| 0.5/1/2 | 6.7 | M3 |
| 5/10/20/30/50kg | 7.7 | M4 |

--- Specifications / 规格参数 ---

| Capacity/量程 | 0.5/1/2/5/10/20/30/50 kg | | |
|--|--|-------------------------------|------------------------|
| Rated Output 额定输出 | 2.0 mV/V | Compensated Temp. 温度补偿范围 | -10...+40°C |
| Excitation 激励电压 | 3~12V | Operating Temp. 工作温度范围 | -20...+60°C |
| Zero Balance 零点输出 | ±0.1mV/V | Temp. Shift Zero 零点温度漂移 | ±0.03% of R.O./°C |
| Nonlinearity 非线性 | ±0.1% of R.O. | Temp. Shift Span 灵敏度温度漂移 | ±0.02% of R.O./°C |
| Hysteresis 滞后 | ±0.1% of R.O. | Input Resistance 输入阻抗 | 380±30Ω |
| Nonrepeatability 非重复性 | ±0.05% of R.O. | Output Resistance 输出阻抗 | 352±3Ω |
| Creep(5min) 蠕变 | ±0.1% of R.O. | Insulation Resistance 绝缘阻抗 | >2000MΩ(50V) |
| Safe Overload 安全过载 | 150% of F.S. | Ingress Protection 防护等级 | IP50 |
| Ultimate Overload 极限过载 | 200% of F.S. | Material of Element 弹性体材料 | Stainless steel 不锈钢 |
| Cable 导线 | Ø2*4000mm 4-core shielded cable Ø2*4000mm 4芯屏蔽线 | | |
| R.O.=Rated Output/额定输出 F.S.=Full Scale/满量程 | | | |

• Subject to change without notice / 如有更改,不另行通知