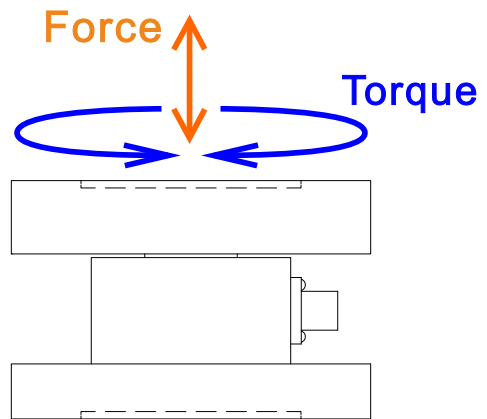
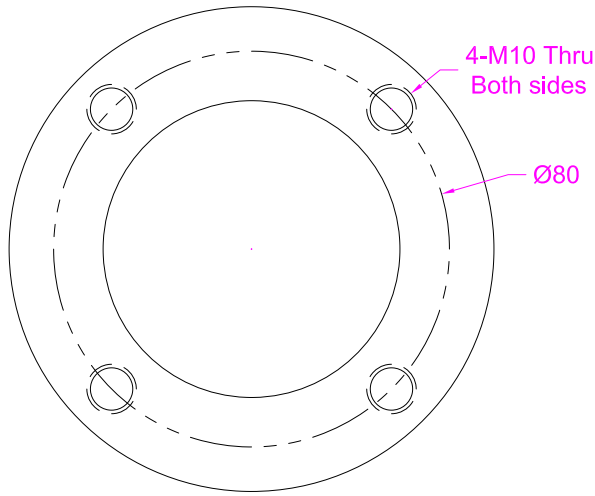


Dimensions in "mm"



--- Specifications ---

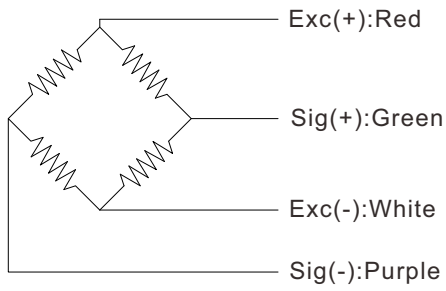
P-1/2

	Torque	Force
Capacity	10/20/30/50/100Nm	1/2/3/5/10kN
Rated Output	>0.5 mV/V	
Excitation	3~15V	
Zero Balance	±0.05mV/V	
Nonlinearity	±0.3% of R.O.	
Hysteresis	±0.3% of R.O.	
Nonrepeatability	±0.2% of R.O.	
Creep(3min)	±0.1% of R.O.	
Safe Overload	150% of F.S.	
Ultimate Overload	200% of F.S.	
Working Temperature	-10...+60°C	
Temp. Shift Zero	±0.03% of R.O./°C	
Temp. Shift Span	±0.03% of R.O./°C	
Input Resistance	380±30Ω	750±100Ω
Output Resistance	350±5Ω	700±30Ω
Insulation Resistance	>2000MΩ(50V)	
Material	Stainless steel	
Ingress Protection	IP50	
Cable	Ø6*3000mm 8-core shielded cable	

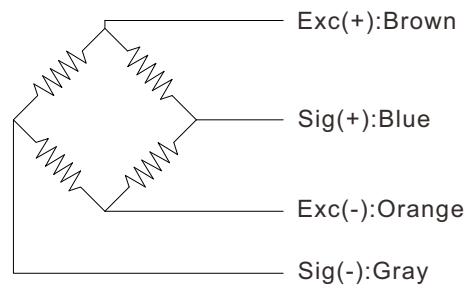
• Subject to change without notice

Wiring Diagram

Force channel



Torque channel



Ordering code

FT2E - A

Code	Torque capacity	Force capacity
A	10NM	1kN
B	20NM	2kN
C	30NM	3kN
D	50NM	5kN
E	100NM	10kN
Consult us for other configurations		

P-2/2

• Subject to change without notice