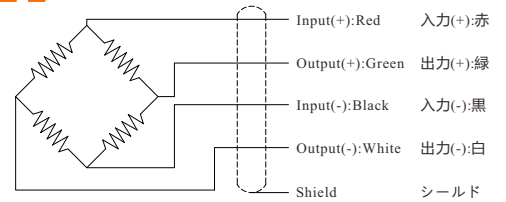


P-1/2

**Ordering code**  
**FS07 - 20kN**  
Model Capacity

| Capacity(KN) | L  | W  | H  | M        |
|--------------|----|----|----|----------|
| 3/5          | 60 | 25 | 70 | M12*1.75 |
| 10           | 60 | 25 | 70 | M16*2    |
| 20           | 64 | 25 | 70 | M16*2    |
| 30/50        | 86 | 35 | 94 | M18*1.5  |

Wiring Diagram/配線図



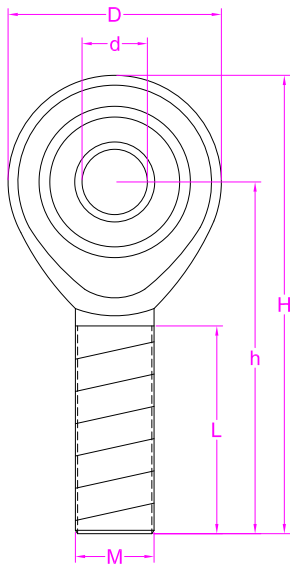
--- Specifications / 仕様 ---

| Capacity/定格容量                                 | 3/5/10/20/30/50 kN  |                               |                     |
|---|---|-------------------------------|---------------------|
| Rated Output<br>定格出力                          | 2.0 mV/V  | Compensated Temp.<br>温度補償範囲   | -10...+40°C         |
| Excitation<br>供給電圧                            | 3~15V   | Operating Temp.<br>動作温度範囲     | -20...+60°C         |
| Zero Balance<br>零バランス                         | ±0.05mV/V   | Temp. Shift Zero<br>零点の温度影響   | ±0.05% of R.O./10°C |
| Nonlinearity<br>非直線性                          | ±0.05% of R.O.  | Temp. Shift Span<br>出力の温度影響   | ±0.05% of R.O./10°C |
| Hysteresis<br>ヒステリシス                          | ±0.05% of R.O.  | Input Resistance<br>入力抵抗      | 390±40Ω             |
| Nonrepeatability<br>繰り返し性                     | ±0.03% of R.O.  | Output Resistance<br>出力抵抗     | 352±3Ω              |
| Creep(10min)<br>クリープ(10min)                   | ±0.03% of R.O.  | Insulation Resistance<br>絶縁抵抗 | >5000MΩ(50V)        |
| Safe Overload<br>許容過負荷                        | 150% of F.S.  | Ingress Protection<br>防塵防水    | IP65                |
| Ultimate Overload<br>限界過負荷                    | 200% of F.S.  | Material of Element<br>起歪体の材質 | Alloy steel<br>合金鋼  |
| Cable<br>ケーブル                                 | Ø5.3*1800mm 4-core shielded cable<br>Ø5.3*1800mm 4芯シールドケーブル |                               |                     |
| R.O.=Rated Output/定格出力 F.S.=Full Scale/フルスケール |   |                               |                     |

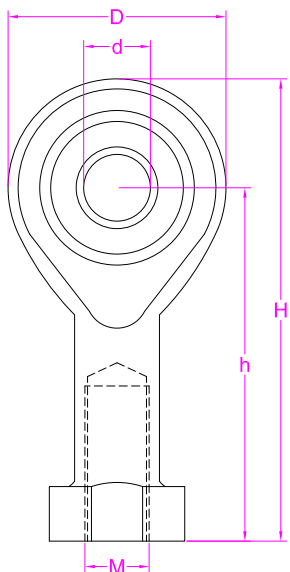
• Subject to change without notice / 予告なしに変更されることが



P-2/2



| Part No. | M        | d  | D  | L  | h  | H  | Load Limit(KN) |        | Weight (kg) |
|----------|----------|----|----|----|----|----|----------------|--------|-------------|
|          |          |    |    |    |    |    | Dynamic        | Static |             |
| EBA      | M5*0.8   | 5  | 18 | 19 | 33 | 42 | 5.7            | 6.0    | 0.013       |
| EBB      | M6*1.0   | 6  | 20 | 21 | 36 | 46 | 7.2            | 7.65   | 0.020       |
| EBC      | M8*1.25  | 8  | 24 | 25 | 42 | 54 | 11.6           | 12.9   | 0.038       |
| EBD      | M10*1.5  | 10 | 28 | 28 | 48 | 62 | 14.5           | 18.0   | 0.055       |
| EBE      | M12*1.75 | 12 | 32 | 32 | 54 | 70 | 17.0           | 24.0   | 0.085       |
| EBF      | M14*2.0  | 14 | 36 | 36 | 60 | 78 | 24.0           | 31.0   | 0.14        |
| EBG      | M16*2.0  | 16 | 37 | 37 | 66 | 80 | 28.5           | 39.0   | 0.21        |
| EBH      | M18*1.5  | 18 | 41 | 41 | 72 | 94 | 42.5           | 47.5   | 0.28        |



| Part No. | M              | d  | D  | h  | H  | Load Limit(KN) |        | Weight (kg) |
|----------|----------------|----|----|----|----|----------------|--------|-------------|
|          |                |    |    |    |    | Dynamic        | Static |             |
| EBJ      | M5*0.8 Dep10   | 5  | 18 | 27 | 36 | 5.7            | 6.0    | 0.016       |
| EBK      | M6*1.0 Dep12   | 6  | 20 | 30 | 40 | 7.2            | 7.65   | 0.022       |
| EBL      | M8*1.25 Dep16  | 8  | 24 | 36 | 48 | 11.6           | 12.9   | 0.047       |
| EBM      | M10*1.25 Dep20 | 10 | 28 | 43 | 57 | 14.5           | 18.0   | 0.077       |
| EBN      | M10*1.5 Dep20  | 10 | 28 | 43 | 57 | 14.5           | 18.0   | 0.077       |
| EBO      | M12*1.25 Dep22 | 12 | 32 | 50 | 66 | 17.0           | 24.0   | 0.10        |
| EBP      | M12*1.75 Dep22 | 12 | 32 | 50 | 66 | 17.0           | 24.0   | 0.10        |
| EBQ      | M14*1.5 Dep25  | 14 | 36 | 57 | 75 | 24.0           | 31.0   | 0.16        |
| EBR      | M14*2.0 Dep25  | 14 | 36 | 57 | 75 | 24.0           | 31.0   | 0.16        |
| EBS      | M16*1.5 Dep28  | 16 | 40 | 64 | 84 | 28.5           | 39.0   | 0.22        |
| EBT      | M16*2.0 Dep28  | 16 | 40 | 64 | 84 | 28.5           | 39.0   | 0.22        |
| EBU      | M18*1.5 Dep32  | 18 | 44 | 71 | 93 | 42.5           | 47.5   | 0.32        |